




<p><u>NORTH WEST TRAINING AND DEVELOPMENT TEAM</u></p> 	<p>Director: Lynn James-Jenkinson</p> 
<p>Date of submission:</p> <p>18th August 2006</p>	<p>Subject:  Update report to Commissioning Group</p>
<p>Executive summary:</p> <p>The following report is a summary of the activity of the NWTDT in the period April 2006 to June 2006 and the actions taken to implement the Business Plan agreed by the Commissioning Group.</p>	
<p>Recommendations:</p> <ul style="list-style-type: none"> • That the Commissioning Group accept the contents of this report. • Ibrar Riaz, from the steering Group and Gary Hargreaves from the Regional Task Force would like to thank the Commissioners for making them feel welcome at their last meeting. • Support in principle to the development of a regional charter for employment to be developed further through the Regional Task Force and Regional Health and Social Care Lead Officers groups on behalf of the organisations they represent. This will support organisations across the regions in the DDA requirement to have a disability equality statement by December 2006. 	

Update Report (5) – North West Training and Development Team – August 2006



1. INTRODUCTION

The previous report (4) has been circulated to Self-Advocates, Health and Social Care Lead Officers and the Family Forum. The report is also available on the NWTDT website

2. BUSINESS MANAGEMENT



Lynn



Commissioning Group –

REQUIRED OUTCOMES



- Quarterly report to be submitted against business plan produced by team members.
- Report to be circulated.

Achieved, summary report submitted to North West ADSS.



Budget –

REQUIRED OUTCOMES

- End the year balancing the budget and refund 50% of overspend carried over.

Budget plans on target, regular meetings are planned with colleagues from Salford's finance department.



Service Level Agreements

REQUIRED OUTCOMES

- Agreements to be finalised with all Primary Care Trust's, Local Authority's and Care Services Improvement Partnership/ Valuing People

Still to sign –

- Bury PCT and Local Authority – with Nick Morey
- North and South Trafford PCT's – with Jim Campbell
- Stockport PCT and Local Authority – with Janet Pearson
- Central and East Cheshire PCT's – with Mary Kirkham
- Oldham PCT – with Terry Hevicon-Holland
- Ellesmere Port and West Cheshire PCT's – with Helen Garry



Communication-

REQUIRED OUTCOMES

- Further develop the website and improve communication with the Region.

- Improve skills within the team in producing more accessible information

The newsletter will be available shortly; this contains our calendar for this year.

We are continuing to develop the information on the website. Chris Hatton, Lancaster University, is doing some work with the core team regarding evaluation skills.



Team –

REQUIRED OUTCOMES



- Agreements to be finalised and monitored
- Associates - each team member to support 2 new associates to create capacity and sustainability across the region

All agreements with team members are in place.

IC Jason Rhodes is in the process of developing an accessible associate agreement.

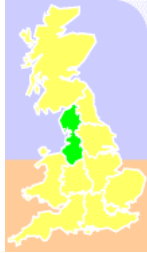
Team members are developing mentoring arrangements with individuals across the Region with the aim of those people becoming associates to the team.

We have recruited Dene Donalds to take a strategic lead in relation to Workforce Development, Dene will commence work for the NWTDT in September.



INCLUSION/ SELF-ADVOCATE AND FAMILY LEADERSHIP

Regional Task Force



Lynn

REQUIRED OUTCOMES

- To maintain a joint regional force to influence change.
- To make sure Valuing People and the new white paper agenda is a priority and focus for the NW
- Ensure self-advocates are supported to enable true participation in the group.
- To deliver joint regional action and direction to lead officers and to continue to stimulate innovative across the North West.
- To influence and inform the National task force or other bodies relating to regional priority issues.

Self Advocates



Regional task force representatives



Jason and Val



CONFERENCE PRIORITIES

1. Give us the money to buy the services we want. In Control or Direct Payments.
2. We want Independent Advocacy as a right whenever we need it.
3. We want real jobs with the same pay as every one else.



REQUIRED OUTCOMES

- Local targets for increased investment in advocacy linked to national/regional levels.
- People traditionally excluded will be receiving advocacy support from a range of sources. Learning Disability Partnership Boards aware of and using regional and national self-advocacy leaders who come from their areas and are supporting their leadership skills.

Regional Forum

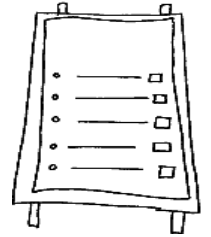


Advocacy in 2006/7

Centrevents have contracted, once again, for the Steering Group to guide the Regions Self

The Regional Forum Steering Group has met twice in this first quarter.

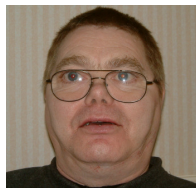
They have set a plan for this year that includes meeting with Dene Repper from the NW Regional CSIP, visiting one other area of the region they are starting with Merseyside and organising a conference at the end of January beginning of February 2007.



They are intending to take the three big issues for this year to all these events as well as telling other people what their role is and how they fit into the National Forum.



Ibrar Riaz and Lee McDermott continue to go to the National Forum Meetings and they have taken our big issues forward there. They tell the steering group what happens nationally.



Paddy Burke is co chair of the Regional Task Force and tells the Steering Group What the Task Force is concentrating on.

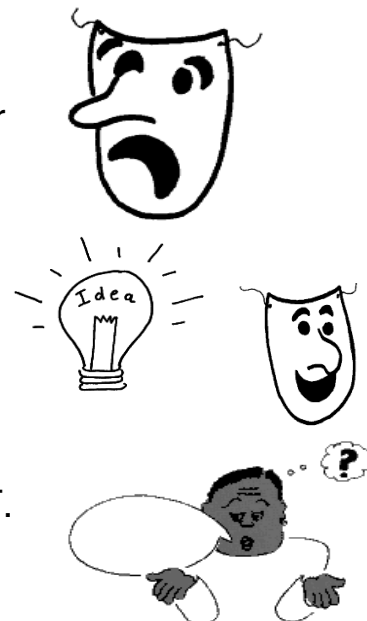
The Regional Task Force Self Advocates.

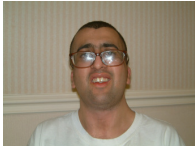
Of the 8 voted Reps only 5 attend regularly. The main reason for some people not being able to come is that their local services say they can't find the money or staff to support them. Some of the people who can come only do so because friends bring them.

At the next RTF meeting the reps are doing presentations to address this and have worked out what it is they need to be able to come to the meetings every time.

They say "THESE MEETINGS ARE REALLY IMPORTANT. NOT EVERY ONE UNDERSTANDS THAT"

The group are also making sure the 3 big issues are not forgotten.





Commissioning Representatives.



Ibrar Riaz, from the steering Group and Gary Hargreaves from the Regional Task Force would like to thank the Commissioners for making them feel welcome at their last meeting. They both fed this back to their groups.

I C Jason Rhodes



Jason Rhodes has registered with the Inland Revenue as a sole trader, opened a Business Bank Account at the bank and gained the support of Access to Work after they assessed the viability of his business plan.

Jason is working hard and has some good idea's to improve the involvement of people with learning difficulties. WATCH THIS SPACE. Thank you to the Commissioning Group for your support.



Family Forum



Caroline



Phil



Lynne

Caroline Tomlinson / Phil Palmer/ Lynne Elwell

REGIONAL PRIORITIES

1. Education and whole life planning
 - Young people – youth advocacy
 - Getting a statement
 - Engaging with children's services to plan
 - Consistency across the region
 Families getting advice

2. Partnership Boards – linking
 - local partners and regional
 - guidelines LDPB on children

3. Raise the profile of individuals with profound/multiple disabilities
 - family leadership – learning events
 - Partners courses!
4. Information pathways

REQUIRED OUTCOMES

- An increase in the number of family leaders involved in local policy development and planning.
- Increased local investment in family leadership.

Actions for 2006/07.

- Research all organisations linked with families
- Create a database of Families / organisations
- Promote the North West Regional Family Forum at various events throughout the region
- To run the BIG SAY campaign collating the 3 things most important to family members.
- To launch the BIG SAY campaign throughout the press
- To develop a newsletter available to families launching the BIG SAY
- Attend regional events such as Kidequip and the Family Leadership programme to promote the BIG SAY campaign.
- To develop a report which collates the views of families
- To launch the report in April 07 and develop an action plan in line with the task force and family member representatives.
- Link to National Family Network
- Develop topic based 'Master classes' for families to run regionally

Lynne has supported seventeen family carers and several self advocates across the country, who are able to run family leadership courses.

Sharing Knowledge a new course commissioned by Bolton social services and written for family carers and self advocates in Bolton this course, is aimed at parents who have children over the age of 14 and disabled adults.

Partners In Policymaking

Northwest Partners in Policymaking—the northwest experience begins in September – coordinated by Lynne Elwell and Caroline Tomlinson a graduate from the first partners' course in 1996. This is Wigan's 2nd course. Ivan Lewis is booked to speak about national issues to this course.

Sure Start, and social services in Wigan, Salford, Manchester, Trafford and Bury have funded this course.

Merseyside Partners graduates began their 5th course in June 2006

They have developed a series of supports for family carers and a self-advocacy forum run by self advocates supported by Merseyside partners families.

Kindred Spirits

Two Kindred Spirits courses (bringing family members and service providers together) based at Lancaster University have been commissioned by Flyde and Wyre and Lancaster social services. The second Cheshire Kindred Spirits course is running with a third course planned, these are coordinated by two family members, graduates from Partners and Sharing the Challenge.

National family carers network;

Lynne attends the national steering group meetings who have appointed family carers to the national task group. Lynne also facilitated a group of family carers in a meeting with Princess Anne.

Lynne gave a presentation at the ADSS conference and has been invited to be a member of a new advisory board of the Foundation for people with learning disabilities, and the family carers advisory group. The board will meet twice a year in London.

Lynne is co-ordinating a meeting with Ivan Lewis at his requested to meet representatives from NWTDT, Valuing People and Partners graduates at the House of Commons.

Lynne continues to work part time for the national Valuing People Support Team leading on family leadership.

Health and Social Care Leads



Lynn

REGIONAL PRIORITIES

1. Support self-advocates and families and links to Partnership Boards.
2. 2-way communication between Task Force and Partnership Boards (newsletter?)
3. Breaking the Cycle implementation.
4. How are the Partnership Boards doing against Valuing People?
5. 'Soft' outcomes of performance indicators – quality.
6. CSCI – links to protect independent living model.
7. Self-Advocate Forum.
8. Family Forum.

REQUIRED OUTCOMES

- To operate and support leads to deliver the Regional task force direction and action plan.
- To continue to foster joint working across sub regions of the North West for both LA and PCT's..

Lead Officers met in May, the theme for the day related to individuals with complex and continuing health care needs and received presentations from Dr Sue Kirk following research done by Manchester University and by Sarah Hill in relation to postural care. The presentations from the day can be found on the NWTDT website.

2 'think tank' sessions have also been arranged using the 'regional voucher pot' created this year. 1 looked at developing standards

for commissioning services of adults and children with autism and the other supported the development of a work plan linked to the Regional Secure and Forensic Commissioning Strategy and Breaking the Cycle.

Lynn continues to attend sub-regional lead officers groups also.

Providers



Lynn

REQUIRED OUTCOMES

- Support the development of regional providers network

Lynn has been invited to talk to Providers about the current agenda in relation to Health and Social Care and will continue to maintain contact.

We have commissioned a piece of work to produce a guide for the Region with regard to how the Community and Voluntary Sector could respond to developments in individual budgets. This will also look at how the NWTDT can support the sharing of information about potential funding sources for small organisations and individuals.

Lynn is linking with the development of Provider networks through In Control.

Care Services Improvement Partnership  **VALUING PEOPLE**
Support Team

Care Services Improvement Partnership

REQUIRED OUTCOMES

- Copy quarterly report to CSIP representative to report on outcomes.

Achieved



3. ACTIVITY

Health



Janet Cobb

REQUIRED OUTCOMES

Mainstream NHS.

- Demonstrable progress on delivery of Health Action Plans including Partnership Boards having undertaken a self assessment to identify barrier/progress around implementing Action for Health frameworks
- PCT commissioners explicitly considering people with learning disabilities when commissioning mainstream healthcare

Specialist services

- PCTs with Partnership Boards need to review the appropriateness of and investment in specialist services, based significantly upon individualised budgets.
- Identification of children blocked in mainstream acute beds and recommendations for local commissioners/providers in the region to enable the group to retain good health support without losing fundamental citizenship rights.
- To record images of possibilities for people gaining self directed support and self promotion of health and welfare through joint funded packages of health and social care. Defining ways of achieving the joint working and funding arrangements that enable the individual to have a self directed streamlined service provision that they and their families lead.

National developments

- September 21st UK health and learning disability network meeting hosted by the Foundation for People with a Learning Disability the main speaker will be Prof Eric Emerson on the Disability Rights Commission Formal Investigation into health inequalities – to book a place at meeting contact Janet Cobb jcobb@fpld.org.uk (meeting will be at NWTDT office)
- November 28th UK health and learning disability network meeting main speaker will be Dr Jill Rasmussen on the role of a GP with a special interest in learning disability – to book a place at the meeting contact Janet Cobb jcobb@fpld.org.uk (meeting will be in London)
- The Do Once and Share project on Primary Health care and people with a learning disability is now completed for more information on this contact:
Jacqueline.Howard@5boroughspartnership.nhs.uk
- The Do Once and Share project on Child and Adolescent Mental Health and Learning disability project is almost completed for more information on this contact
jonathanbureau@mail.ebpu.org.uk
- BILD have agreed to become host organisation for the UK lecturers network, intention is to develop a steering group across the academic work and an identified key priority is to make the connection between research and practice. Network open to anyone with an interest in training and development issues. To join contact janet.cobb@nwttdt.com

Regional Developments

- The NWTDT primary health care network and the NWTDT acute hospital network may merge with RCN networks – meeting to discuss on 30th May at RCN office in Bolton.
- Sheila Wright is leading on development of a 'managed care network' looking specifically at the needs of people in secure or out of district placements sheila.wright@clha.nhs.uk NWTDT input into this network.
- A new lead has been appointed for children and young people with complex physical needs by CSIP including

children with a learning disability: Bev Playle
Bev.playle@northwest.csip.org.uk NWTDT to work in partnership with CSIP lead.

- Match funding has been found to appoint two more tutors in the NW in relation to postural management.
- The NW health and social care leads meeting on 26th May will have a focus on health and in particular young people with complex and continuing health needs and CAMHs and learning disability agenda.
- A regional event is being planned to coincide with John O'Briens visit in November on support for young people with complex health needs and their families.
- Janet is in the process of recording the stories of families in Cheshire & Lancashire who are seeking individualised budgets on behalf of their children with complex health needs.

Employment



Lorraine



Lynn

REQUIRED OUTCOMES

- More people in paid work.
- Partnership Boards and commissioners of supported employment are jointly using the best practice guidance to raise the standards of employment practice and numbers of people in paid work.
- There are local employment strategies in place with clear actions and review processes.
- Local Government and the NHS are demonstrable 'beacons' in the employment of learning disabled people.
- Partnership Boards and Job Centre Plus are working together well.

In response to one of the 3 big issues from the self-advocates conference a small group of people leading developments in employment have been meeting.

The Regional Task Force agenda in September and the Regional Health and Social care Leads meeting in November will concentrate on the development of Charter for Employment which will set out standards for the North West, particularly for public sector organisations, in relation to supporting people who have experienced services and their families into employment. If these groups support the charter on behalf of the organisations they represent then we will be looking to the Commissioning group to ratify their support of this charter. We ask that this be supported in principle at this stage as evidence of the Commissioning Groups commitment to responding to the North West Regional Self-Advocates conference 3 big issues.

A draft copy will be circulated to Commissioning Group members.

A charter for employment such as this would support public sector organisations in achieving the requirement to have a disability equality statement in place by December 2006.

Self-Directed Support

in  **Control**



Lynn

Care Services Improvement Partnership 

REQUIRED OUTCOMES

- Self-Directed support is a national priority, through the individual budgets and direct payments policies and with person centred planning continuing to be at the heart of the delivery of Valuing People. The CSIP Board has agreed a proposal for CSIP work on self-directed support. In Control is a major success associated with the VPST with over 60 Local Authorities now signed up and wanting support. In Control is leading developments of technologies and understanding about self-directed support.

- Getting to Grips with the Money- Support the NW sites to meet the aims of the programme -
 1. Predict and contain growth
 2. Get better results from existing money
 3. Shift money towards individual budgets and self-directed support
 4. Share learning from regional and local initiatives

Lynn is actively involved in supporting the North West In Control sites and linking these with Getting to Grips with the Money programme.

This work has led to positive links with the Regional Centre for Excellence particularly in relation to the project looking at high cost placements; representatives now attend the Regional Health and Social Care Lead Officers meetings and North West In Control Forum. A commissioning representative from Greater Manchester, Lancashire/ Cumbria and Cheshire/Merseyside have been invited to sit at the Project Steering Group for the Regional Centre for Excellence project, this ensures that commissioning is represented there not simply contracts and procurement representatives.

Local People. Local Services

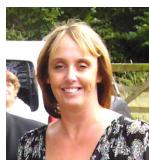


REQUIRED OUTCOMES

- A programme in collaboration with a number of stakeholders that supports the development of support and services closer to home, prevents exclusion and inappropriate out of area placements, to include work on commissioning, housing options and regulation

A session was held with interested districts to look at housing support services across the Region. Partners Foundation will be working individually with those sites and linking the learning back to the NWTDT later in the year.

Breaking the Cycle



Lynn

REQUIRED OUTCOMES

- Partnership Boards ensure that a 'champion' is identified for 'local services'. This person to lead on producing an agreed local action plan, that promotes development of local services and reduction in out of area placements

A 'think tank' session was held on 22nd to develop a regional work plan in response to the Secure and Forensic Commissioning Strategy and Breaking the Cycle. The work plan will be available on the NWTDT website once completed and will report back to the Regional Task Force.

Person Centred Planning



Pauline

REQUIRED OUTCOMES

- Continuation of current programme of work, including website and dissemination of good practice.

PERSON CENTRED PLANNING / QUALITY ASSURANCE

Having person centred planning help us develop supports with people who are in danger of not being listened to.



The Last research that was compiled from Lancaster University states that person centred planning is still a valued tool in helping us consult with people about the lives they want and is essential in working out how best to support this in happening.

The team has been training in various organisations over the past year and has identified a group of people who can work with the team across the northwest in delivering better ways of building capacity for people from a wide range of views.

This means we have a group of people mentors who can help with the continued work across the North West. The new team of mentors include people who have great experience in using services and some of the mentors are people who work in services.

We will be posting profiles of each mentor on the website and also the skills and experiences they bring. Some of the work they will be doing in the team will be to work closely in bringing each other's skills together in achieving positive change.

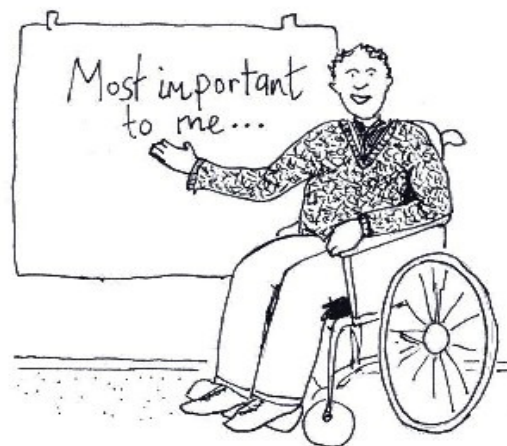


Supporting Person Centred Planning in the North West

Good research tells us what we already know! The person centred planning research by Lancashire University was the biggest study in the world on person centred planning. The research told us that by using person centred planning people had more choice, more people in their lives, more contact with their family, and more activities and therefore busier and better lives.

The research report suggested some important things to do

- 1) keep going and do more



- person centred planning
- 2) help services change as a result of person centred planning
- 3) help managers use person centred thinking tools and develop person centred teams
- 4) support facilitators, people who are leading their own plans, and families leading planning

To get a copy of the full report, or easy to read version please email Eric Emerson on eric.emerson@lancaster.ac.uk
 To get a copy of a power point presentation on what this means for services please email me on helen@helensandersonassociates.co.uk

In the North West we are helping people to do this by getting together four times as year as the **Regional Person Centred Planning Group**. It is for people, their families, facilitators, person centred planning co-coordinators, people in task groups or implementation groups... anyone interested in person centred planning!

The dates and plans for this are

- **May 30th – Person Centred Reviews**

Person centred reviews are a way of developing more person centred and responsive services, and developing living descriptions of how people want to live. These living descriptions



can be developed into person centred plans. This will be led by Gill Bailey and Julie Bray from Helen Sanderson Associates. This event is free to people in the North West. Where? NWTDT office

- **July 13th - Self Advocates Leading Planning - What are we learning in the USA and UK?**



This is an exciting opportunity for everyone to learn with Pathfinders from California, USA, North West Listen to Me! and people talking about `Hands Off My Plan!`. This event is free to people in the North West
Where? NWTDT office
November - Support Planning: person centred planning with teeth?

Support Planning is a style of person centred planning that people can use when they have an individual budget, for example as part of In Control or the Individual Budget Pilot Programme.

in  **Control**

Helen Sanderson and Michael Smull will share what we are learning about support planning, and different ways of developing them. They will introduce a new graphic process for support planning, and 'Planning Live!`.

Cost: to be decided

Where? to be decided

- **February – an event with John O'Brien**

As well as these regional events, we are supporting **person centred planning co-ordinators** to come together, share, problem solve and learn.



These days are coordinated by Gill Bailey. Please contact Gill for information on this. You can call Gill on 0797 0909463 or email her on gillianbailey32@hotmail.com.

There is a **national gathering** for all person centred planning co-ordinators on 18th and 19th September in Manchester. Please contact me if you are interested in a place:

helen@helensandersonassociates.co.uk

Ethnicity and Culture



Nabela

REQUIRED OUTCOMES

- Continuation of current programme of work, including website and dissemination of good practice.

Ethnicity Programme

Valuing People reminded us that people from minority ethnic communities with learning disabilities face substantial inequalities and discrimination in accessing employment; education, health and social services, this needs to change people must no longer be marginalised or be excluded.

The government has identified many ways in which services and support to people with learning disabilities from minority ethnic communities are failing to meet the needs of individuals and their families. There are a growing number of innovative initiatives across the country that are working towards improving services.

Valuing People and NWTDT ran a development support programme in 2004/2005 and then again 2005/2006 to support partnership boards in making improvements. The Valuing People support team have been reviewing with partnership boards how they are progressing on this issue. The progress has been shown to be slow and patchy in some areas, however in other areas real changes are happening.

The NWTDT have decided to continue this work by running this programme that will begin in October 2006 to help local teams start to deliver a local plans to improve services. Throughout the programme advice and support will be available from people who have expertise in this field. This programme is for anybody who has an interest in driving the agenda of ethnicity forward. This will be an opportunity for teams to gain confidence, knowledge and

focus enabling participants to have a shared understanding of issues, hear about successes, action plan and implement between sessions.

The programme was very successful in the past and participants from the previous courses will be supporting this programme. The programme will be welcoming all stakeholders, by doing this action plans will reflect and ensure that people from minority ethnic communities and their families have a voice in informing service providers of their needs and expectations.

Cultural And Spirituality Awareness Day For All

This course has been developed to explore how we work across boundaries for inclusive communities from many perspectives. This day will be an opportunity for participants to share stories from different cultural and spiritual perspectives that help us overcome the barriers to segregate the people we support. We hope through the day we create safe spaces for people to explore their own identities, share experiences and memories and examine the effects of discrimination and prejudices in their lives, begin to challenge assumptions both from an individual perspective and an organisation perspective. Through hearing practical examples this will help participants to think about steps to future outcome.

Graphic Facilitation Mentoring Group

Graphics is a creative way of facilitating or planning work by learning how to create a graphic record of meetings, events and discussions. The NWTDT are supporting a group of individuals in creating graphic records which will present information that is accessible to all people truly engaging and involving everybody.

Transitions



Pauline

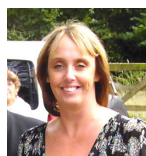
REQUIRED OUTCOMES

- Extension of the current programme to gain a network covering every local authority in the North West.

One network event has already run this year, this was well attended and supported people to think about the use of individual budgets to support positive transitions for people.

Initial contact has been made with Skills for Care in relation to the developing 14-19 agenda and the potential links this could have with young people in transition.

White Paper



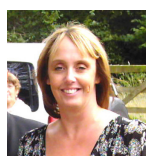
Lynn

REQUIRED OUTCOMES

- To promote awareness sessions on the recent white paper across the region.

Presentations have been given to the self-advocates steering group, family forum, regional task force, some provider organisations and within all the development work undertaken by the team.

Workforce Development



Lynn



Paul

REQUIRED OUTCOMES

- Continuation of work programme supporting the Regional Trainers Network
- Development of Training Partnerships that promote and support self-advocates and families to plan, lead and take part in training.
- Promotion of strong links with North West Sector Skills Productivity Alliance
- Promotion of strong links with National work in relation to workforce development

The Regional Training Network will resume and meet on a quarterly basis from September 2006. Based on discussions with a number of people involved in development and training, the next session will focus on effective implementation of the revised common induction standards.

Funding has now been secured from the Greater Manchester Strategic Health Authority and the 10 Greater Manchester Learning Disability Partnership Boards to enable the creation of a new development and training partnership. Its purpose is to:

Ensure the increased capacity and effective delivery of joined up workforce development and training strategies for services for people with learning disabilities

The initial meeting of the Management Board has recently taken place and a detailed work plan for the first year is in the process of being developed.

The creation of this partnership will enable:

- Development and sharing of training opportunities across Greater Manchester districts
- Specialist training needs to be more effectively provided for
- Provision of additional places on training across the county, particularly for self-advocates and family members

- Development of training pathways for a range of staff groups.

Further information on this is available at www.nwtdt.com/gmpartnership.

The NWTDT workforce development lead is already linked in, and attending, national workforce development groups and the sub groups of the Sector Skills Productivity Alliance where the opportunity to run a workshop in relation to In Control and the workforce implications linking to individual budgets at their next conference has been secured.

Lynn has met with the Regional Network manager for Skills for Care to look at how the NWTDT can support Skills for Care consider its role in supporting the personalisation agenda.

Day Support Services



Paul

REQUIRED OUTCOMES

- Continuation of work programme supporting the Regional Network

This network has continued to meet on a quarterly basis and has over the past year been attended by representatives from 21 Partnership Boards. As well as providing opportunities for information exchanges and updates, each session addresses one major issue.

The most recent session focussed on Connecting. Presentations will shortly be posted on www.nwtdt.com. The session included group work which covered auditing best practice in relationships between providers and:

- Self-advocates

- Family members
- Community organisations and community leaders
- Other council/public bodies

The work that came out of this is being developed into an action-planning tool that participants will then be using with inclusive stakeholder groups.

The next session of the network will look at *'In Control'*.

In addition, consultancy work continues with three Partnership Boards. In one area a series of major development workshops with the full range of stakeholders has been taking place in order to help develop a shared vision and most importantly to enable its implementation. In another district, work has been going on to support the translation of person centred plans into action. This has clearly led to some significant changes in the ways that people are leading their lives, and has had some implications for the ways in which supports have been organised and provided.

Interesting developments reported at the last network meeting include:

- Another two districts having now closed all day centres
- An increase in the numbers of people receiving individualised supports from home and not going into service bases
- Development of a person centred planning team in day services in one district
- Development of a generic model offering supports on a locality basis across all people using adult services

The last round of Skills for Best Practice programmes has now concluded and this has facilitated some considerable developments in the ways in which:

- People are leading their lives
- Self-determination
- The increased range of natural supports and relationships in peoples' lives

- A marked increase in the numbers of staff working as 'community connectors' and 'community builders' as opposed to the more traditional day service worker role
- Partnership working with community organisations

This programme is shortly to be redeveloped with the major emphasis on Community Connecting.

4. RECOMMENDATIONS TO COMMISSIONING GROUP

- That the Commissioning Group accept the contents of this report.
- Ibrar Riaz, from the steering Group and Gary Hargreaves from the Regional Task Force would like to thank the Commissioners for making them feel welcome at their last meeting.
- Support in principle to the development of a regional charter for employment to be developed further through the Regional Task Force and Regional Health and Social Care Lead Officers groups on behalf of the organisations they represent. This will support organisations across the regions in the DDA requirement to have a disability equality statement by December 2006.

5. CONCLUSION



This year the team is in a position to concentrate on developing the business of the team to better meet the needs of the Region in a more flexible way and to develop the skills available through mentoring, promoting and developing new associates across the North West. We are also in a better position to influence national policy and development again.