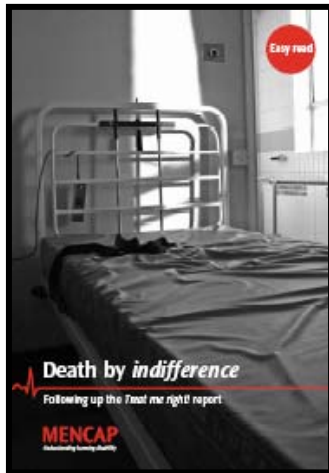


Independent Inquiry into Access to Healthcare for People with Learning Disabilities

About the Inquiry



Who set it up?



Why?

Inquiry Team

Sir Jonathan Michael - chair

Two Panels

- a) people with LDs who use services
- b) doctors and managers

Two Carers forums

- a) family carers
- b) carers of PMLDs

Two secretaries – Anne Richardson & Yelekci



How will the Inquiry work?



We will listen to people with learning disabilities

Families and carers

Nurses and doctors

Organisation like Mencap, the Disability Rights Commission, the National Patient Safety Agency and others.

Questions we will ask



What worries you most when people with a learning disability go to see the Doctor or go to hospital?

What can be done to improve things for people with learning difficulties when they see the doctor or go to hospital?



Examples of good practice

Written evidence

By 19th October

inquiryplds@dh.gsi.gov.uk



DRAWINGS REPRODUCED WITH PERMISSION FROM PEN MENDONCA, GRAPHIC FACILITATOR 7th September 2007

The Independent Inquiry into Access to Healthcare for
people with learning disabilities



We are worried that this is going to be just another report that doesn't make a difference

Some people need extra support so they can access health care

We want to meet in 2 years time to check that this Inquiry has improved things for people



We need to share good examples of what helps

We need to make decisions about the most important things to start working on first

A PANEL OF PEOPLE WHO RUN HEALTH SERVICES



We want this report to have 'teeth'!

Standards for making sure we get equal access

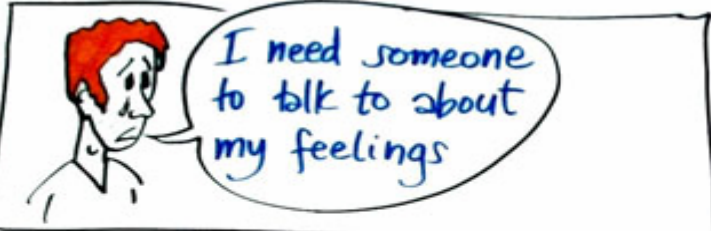
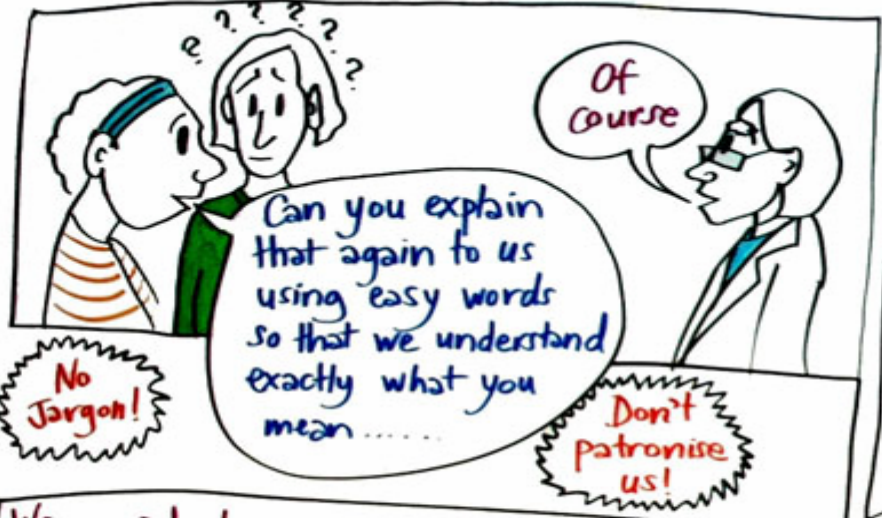
1	2
3	4

Our recommendations could be part of contracts that health services sign up to



This work covers children as well as adults.

This is about discrimination in health services



Sometimes people with learning disabilities don't get equal access to therapies like Talking therapies, and other services that help people stay well, (including screening)

We need to see health workers who know & understand us - not a different person every time.

We need good support & independent advocacy



"If you don't have a good support worker, advocate or family member with you you are like fried chicken!"



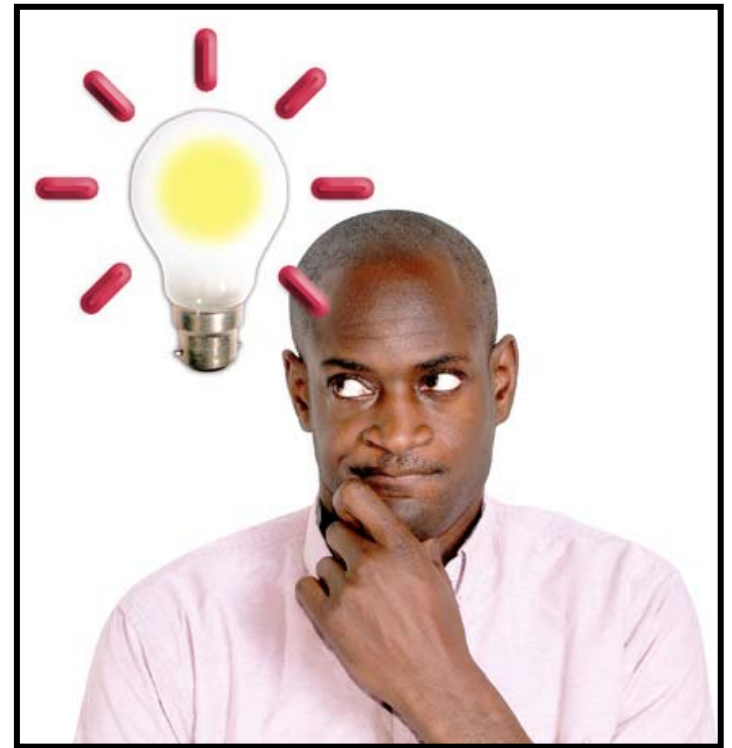
Some people have been taken off G.P. surgery lists because they are seen as too challenging for the service.



Find creative ways to help us understand about our treatment.
Give us information to suit us as an individual.

What do we want?

- To make a difference
- Improve the quality of healthcare for people with learning disabilities



Our report



We will publish a report for the health service on how to improve healthcare and treatment for people with learning disabilities by June/July 2008.

www.iahpld.org.uk